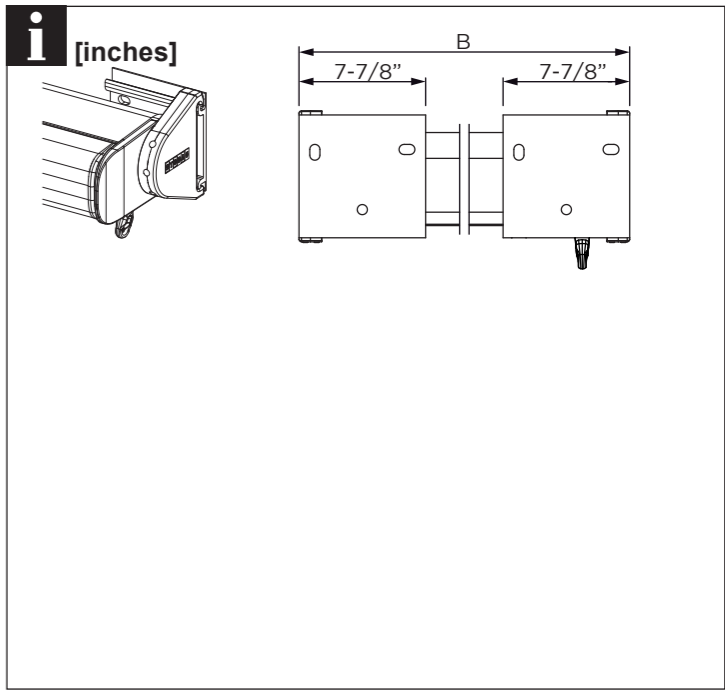
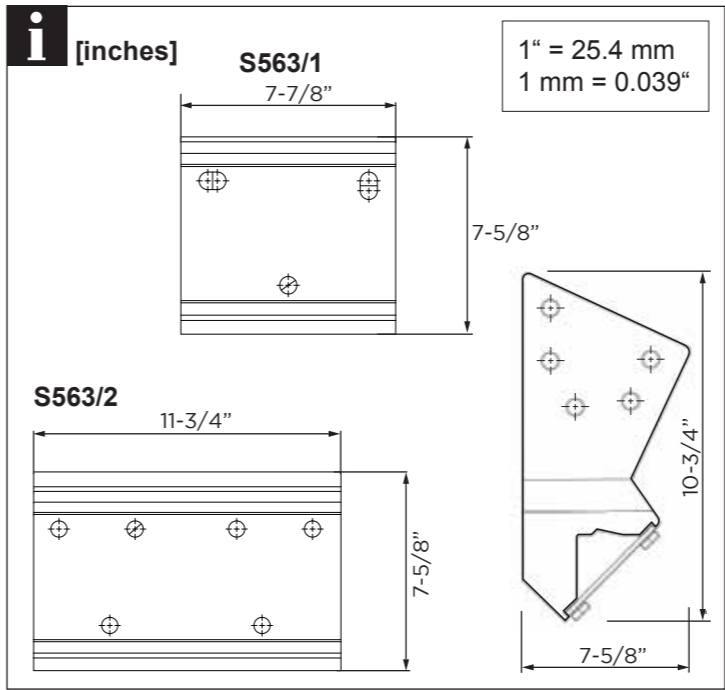
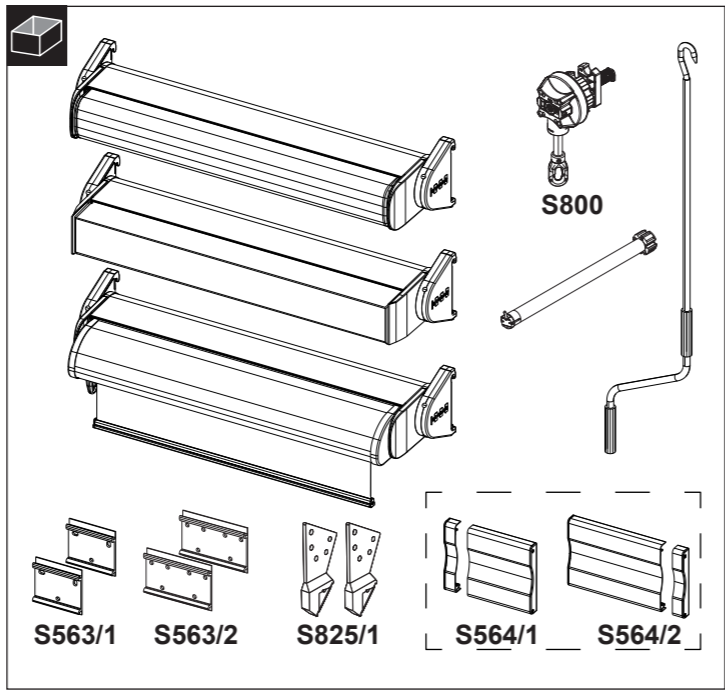
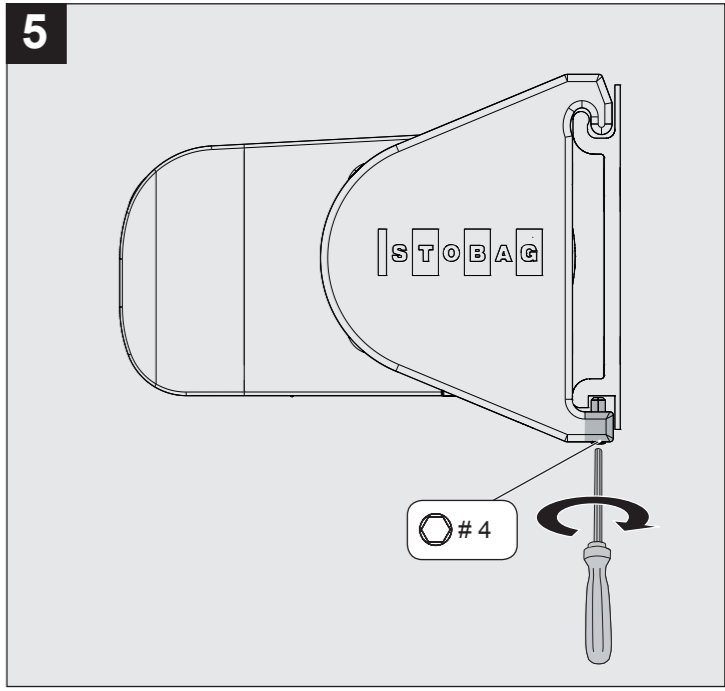
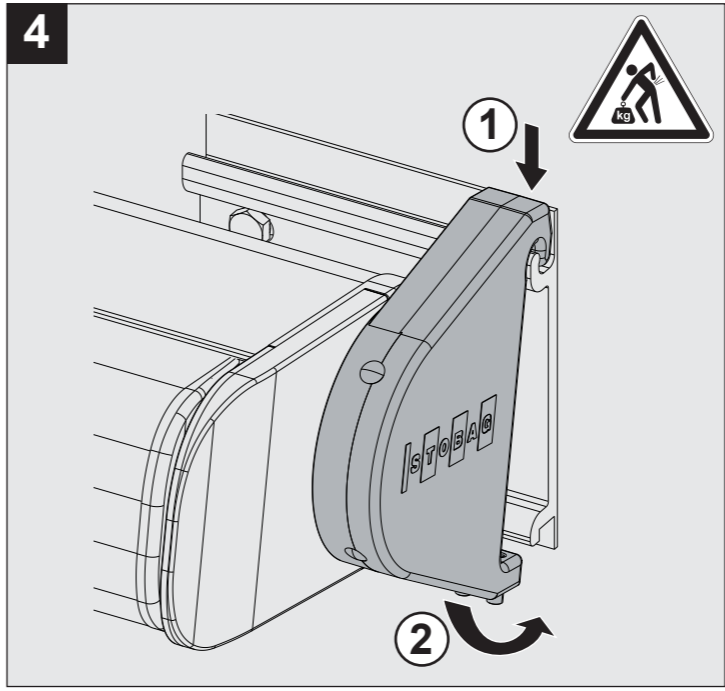
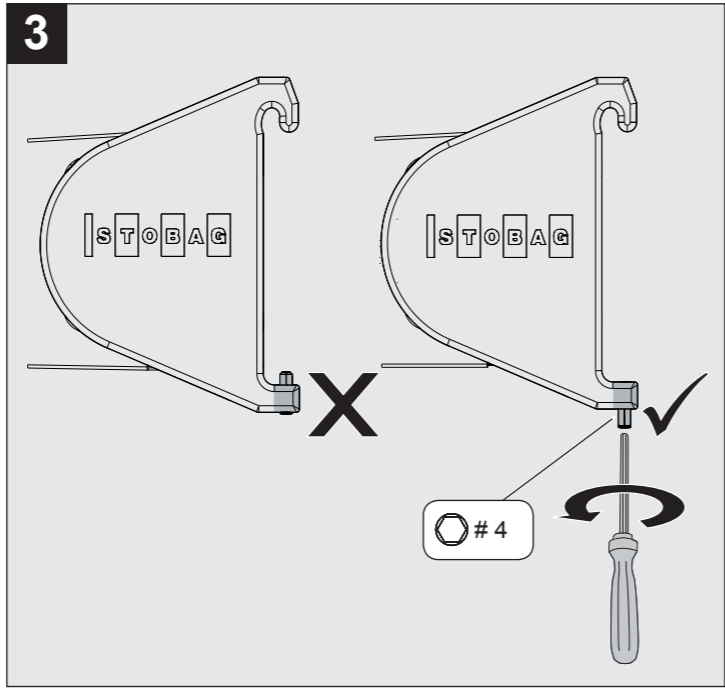
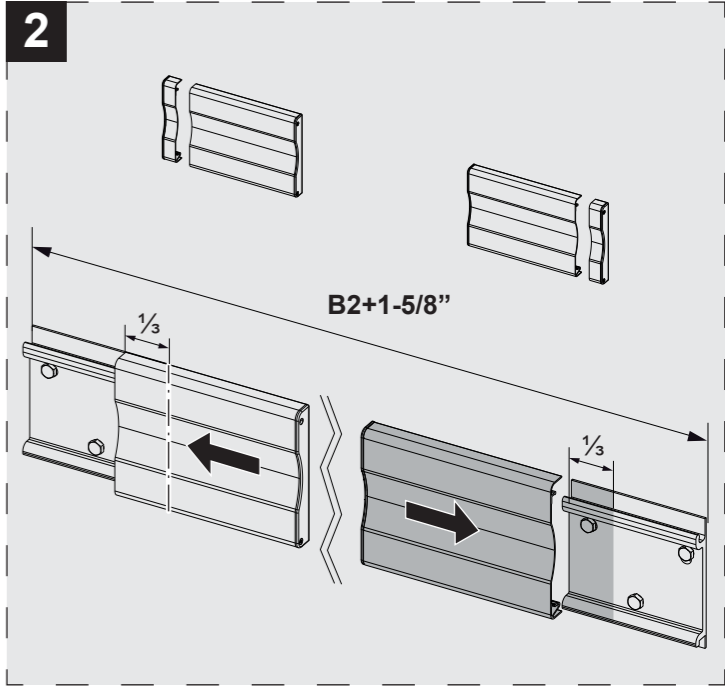
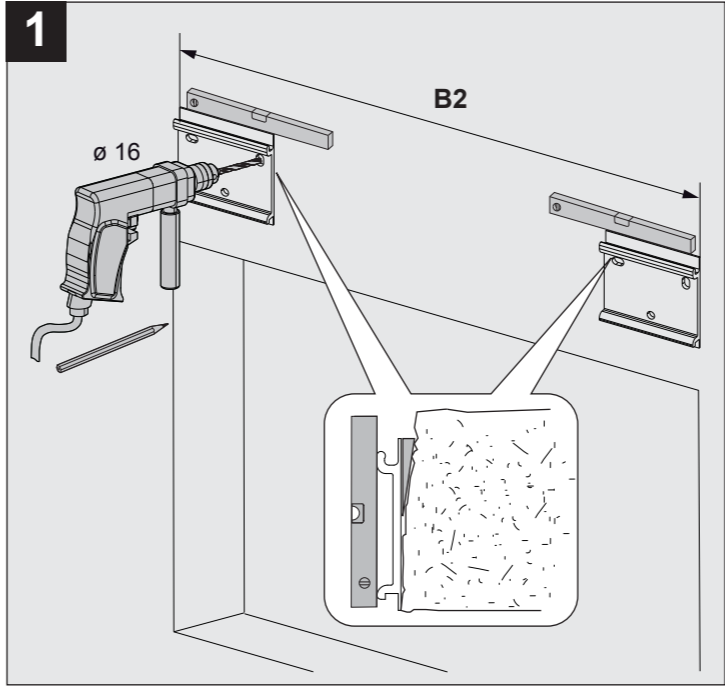
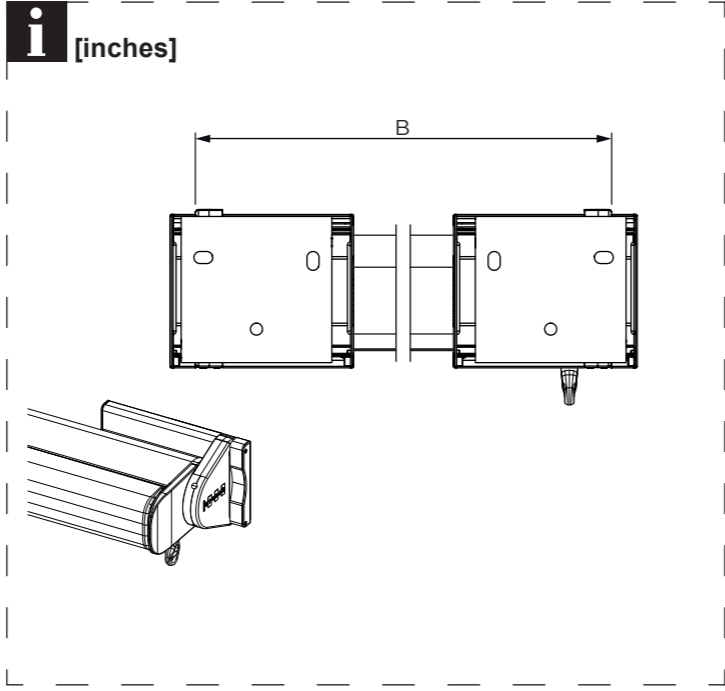


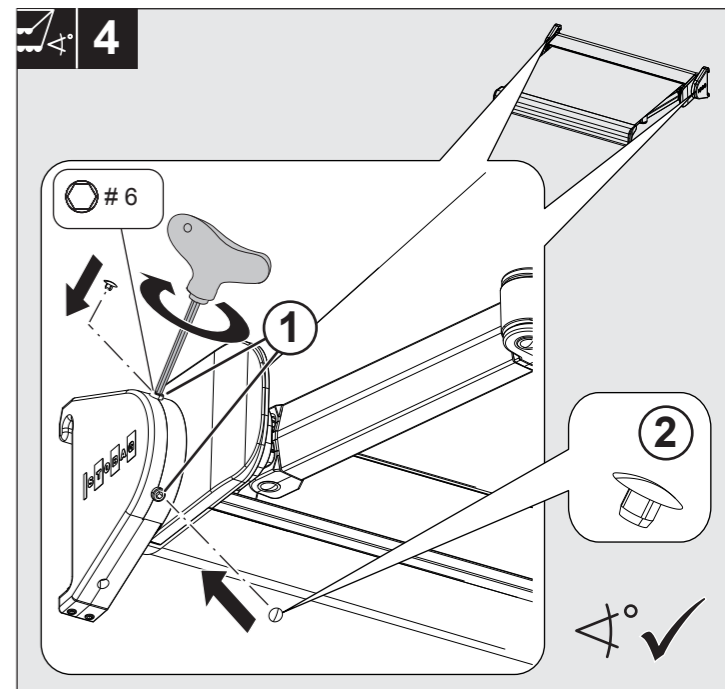
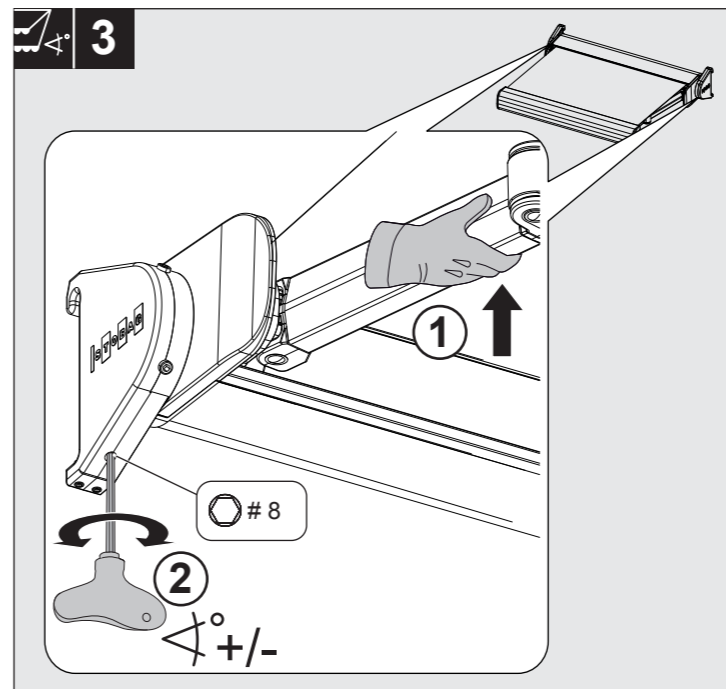
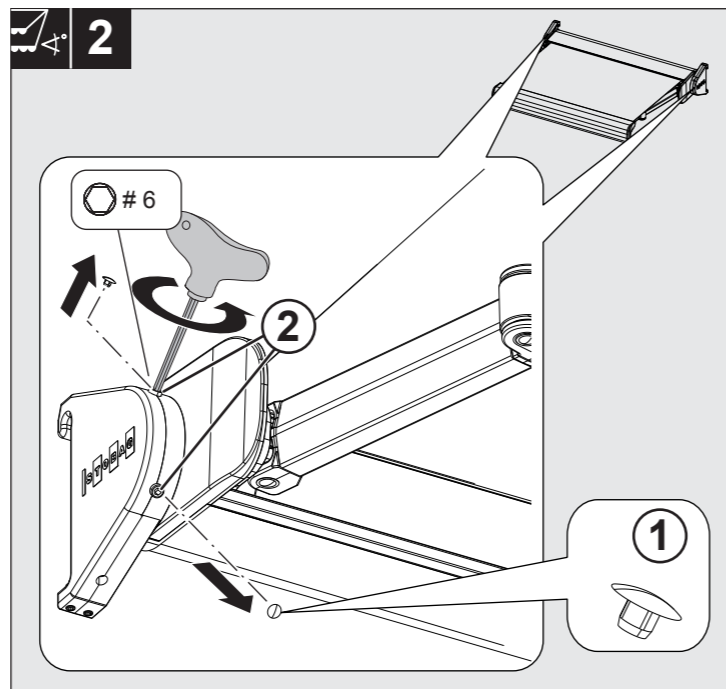
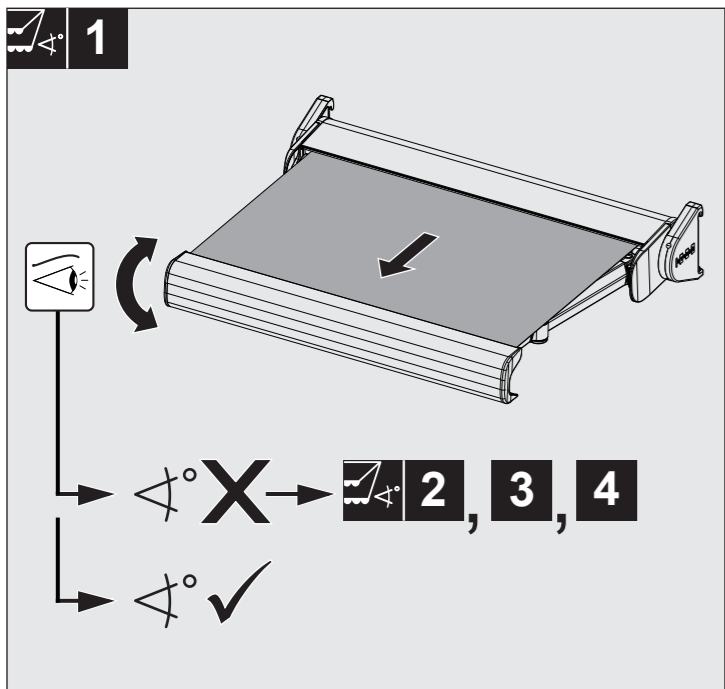
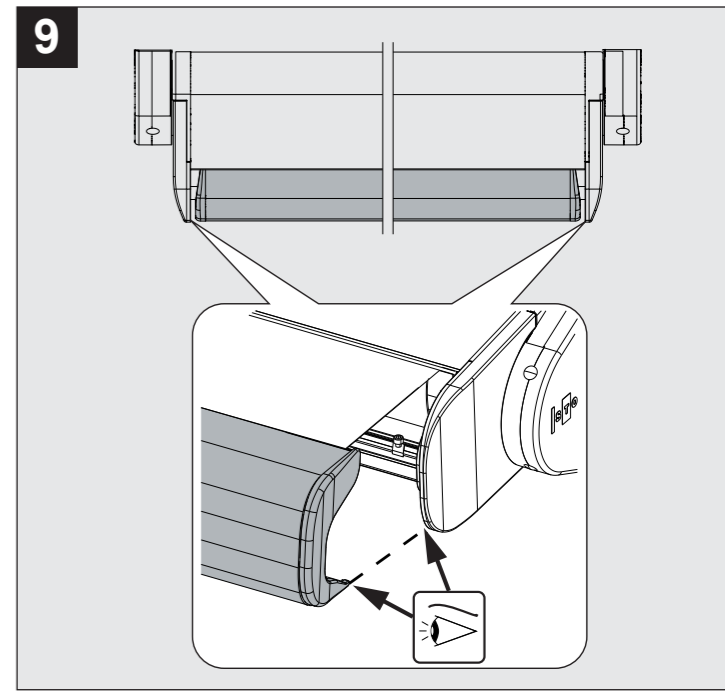
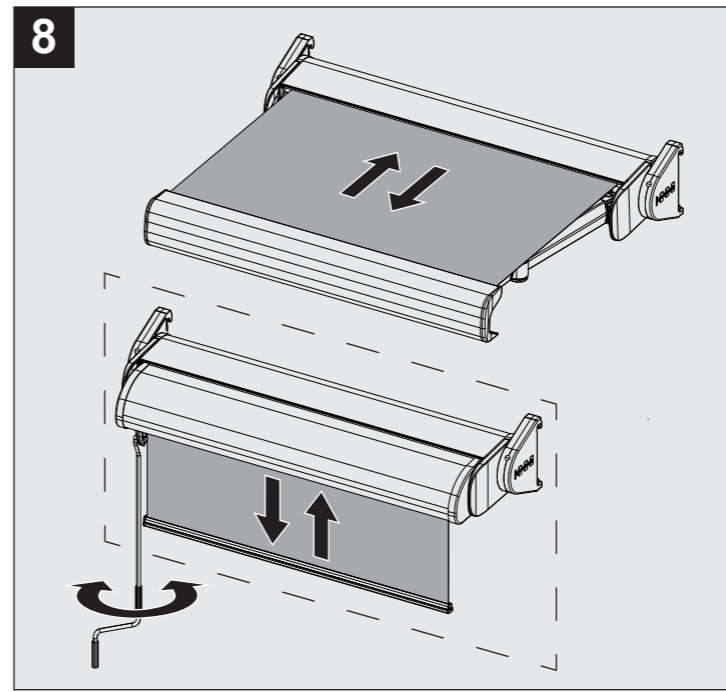
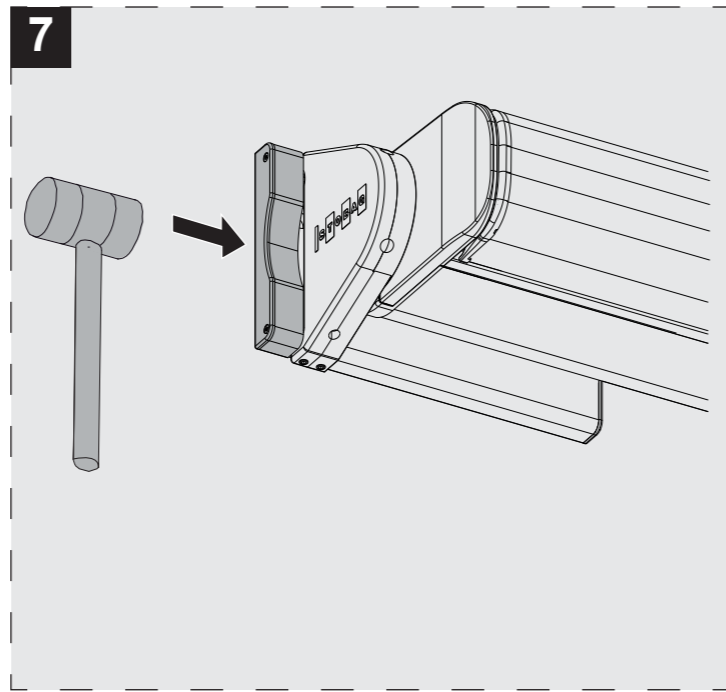
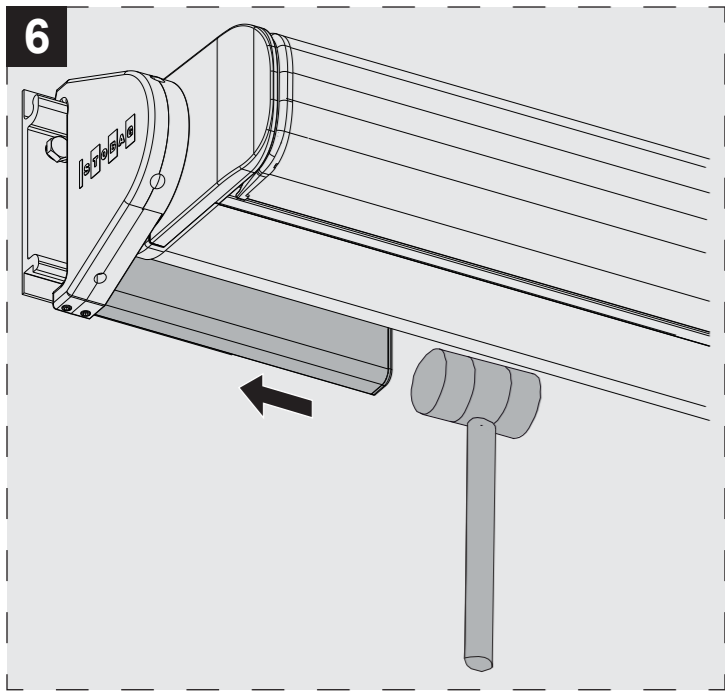
BX3000
 Art. 252196 V01 2019-04-01
 © STOBAG AG www.stobag.com



! EN 13561:2004+A1:2008 CE



INSTALLATION IS ONLY TO BE CARRIED OUT BY TRAINED SPECIALISTS. IT IS EXTREMELY IMPORTANT THAT THE SAFETY INSTRUCTIONS IN THE OPERATING MANUAL BE FOLLOWED.





STOBAG TENDABOX

CRANK OPERATED FULL CASSETTE FOLDING ARM AWNING SYSTEM

